



MidPenn Legal Services

Critical Help for Critical Moments



Mission Statement



MidPenn Legal Services is a non-profit, public interest law firm dedicated to providing equal access to justice and high quality civil legal services to low-income residents and survivors of domestic violence in 18 counties in Central Pennsylvania.



MidPenn's Lawyers and Paralegals provide free legal help to residents of:
Lancaster
and

- | | | | |
|---------|------------|------------|------------|
| Adams | Clearfield | Huntingdon | Perry |
| Bedford | Cumberland | Juniata | Schuylkill |
| Berks | Dauphin | Lebanon | York |
| Blair | Franklin | Mifflin | |
| Centre | Fulton | | |

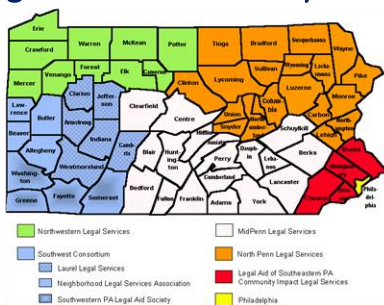


MidPenn Offices

- Altoona
- Bedford
- Carlisle
- Chambersburg
- Clearfield
- Gettysburg
- Harrisburg
- Lancaster**
- Lebanon
- Lewistown
- Pottsville
- Reading
- State College
- York



Legal Services in Pennsylvania



Who is Eligible?



MidPenn serves individuals whose income is at or below 125% of the federal poverty threshold. Survivors of domestic violence receive protective services regardless of income.



71,204
Number of Lancaster County Residents Eligible for Legal Aid Services



We Provide Legal Advice, Representation and Education



Substantive Areas

- Consumer
- Family
- Housing
- Public Benefits
- Employment Law



Emergency Advocacy

- Protection from Abuse
- Protection of Victims of Sexual Violence or Intimidation
- Termination and/or Reduction of Public Benefits
- Unemployment Compensation
- Certain Custody Actions
- Utility Terminations
- Sheriff Sales
- Mortgage Foreclosures
- Lockouts
- Relocations or Reductions/Change of Care



Family Law

Custody
Domestic Violence
Divorce



Melissa Schweers



Katie Zimmerman

Stephanie Longenberger

Housing Law



Habitability



Jim Orgass



Foreclosure



Private and Public Housing



Golsha Cruz



Eviction

Public Benefits Law

Medical Assistance



Valerie Case

SSI

Unemployment – Public Benefits

Supplemental Nutrition Assistance Program



Michael Goldberg



Paul Sternberg

Social Security Disability

Employment Law



Criminal Expungement

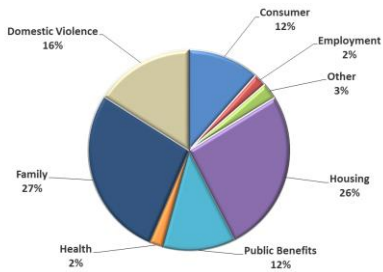


Barriers to Employment



Family Medical Leave

2014-2015 Case Statistics



Special Projects



- Low-Income Taxpayer Clinic
- Elder Law
- Medical-Legal Partnership

Low-Income Taxpayer Clinics



The LITC provides legal advice and representation to low-income taxpayers experiencing tax controversies.



Education and outreach to low-income taxpayers.

Elder Law

MidPenn provides legal advocacy to senior citizens (age 60 and over) in a variety of civil cases through a special contract funded by the Lancaster County Office of Aging including:

- ✓ Power of Attorney
- ✓ Guardianship
- ✓ Public benefits
- ✓ Protection From Abuse
- ✓ Housing



Linda Timberlake

Medical-Legal Partnership



The Lancaster Medical-Legal Partnership is funded by a grant from the United Way of Lancaster County.



The MLP advances the financial stability and health of Lancaster County residents needing frequent health services by integrating civil legal aid and financial case management with an intensive, high-utilization health care treatment model.

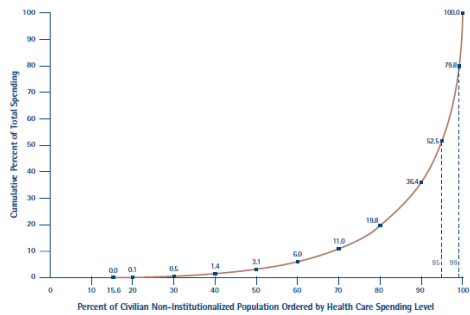
Core functions of MLP

Three components:

- Direct legal assistance to patients
- Training and education for providers and staff
- Joint systemic advocacy

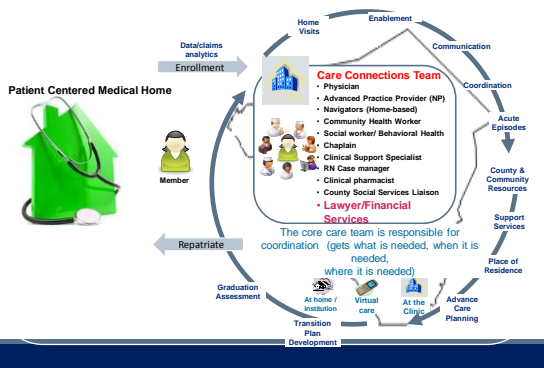
Emphasis on PREVENTION—addressing legal needs before they result in legal or medical emergencies

FIGURE 3. DISTRIBUTION OF HEALTH CARE SPENDING, 2008



Source: NIKCM Foundation analysis of data from the National Health Expenditure Accounts, available at <http://www.cms.gov/NationalHealthExpendData/>

Development of Care Connections High Risk Team



“Typical Superutilizer”

Usually multiple chronic, co-morbidities, including CAD, CHF, COPD, DM, CKD. With frequent admissions

Often behavioral health (trauma, SMI, D and A)

Sometimes with Intellectual disability

Always with social isolation, or significant psychosocial barriers (DV, housing, food insecurity, transportation, financial etc.)

Any combination can put you at risk.

Community Legal Education



Educational Materials



Agency and Community Education Seminars



Community Health Fairs and Expos

Contact For Lancaster’s MidPenn Office

MidPenn Legal Services
38 N. Christian Street
Suite 200
Lancaster, PA 17602
717-299-0971
800-732-0025
